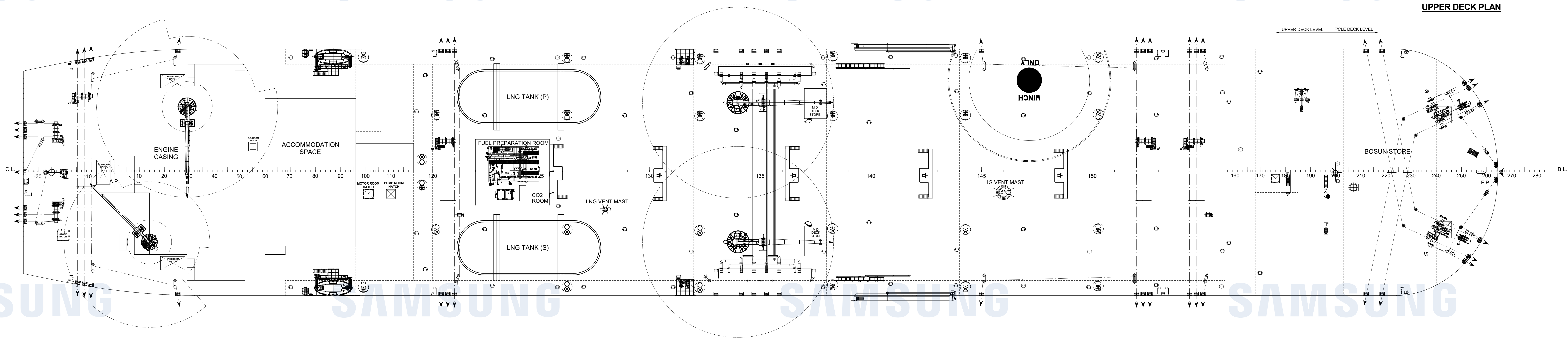
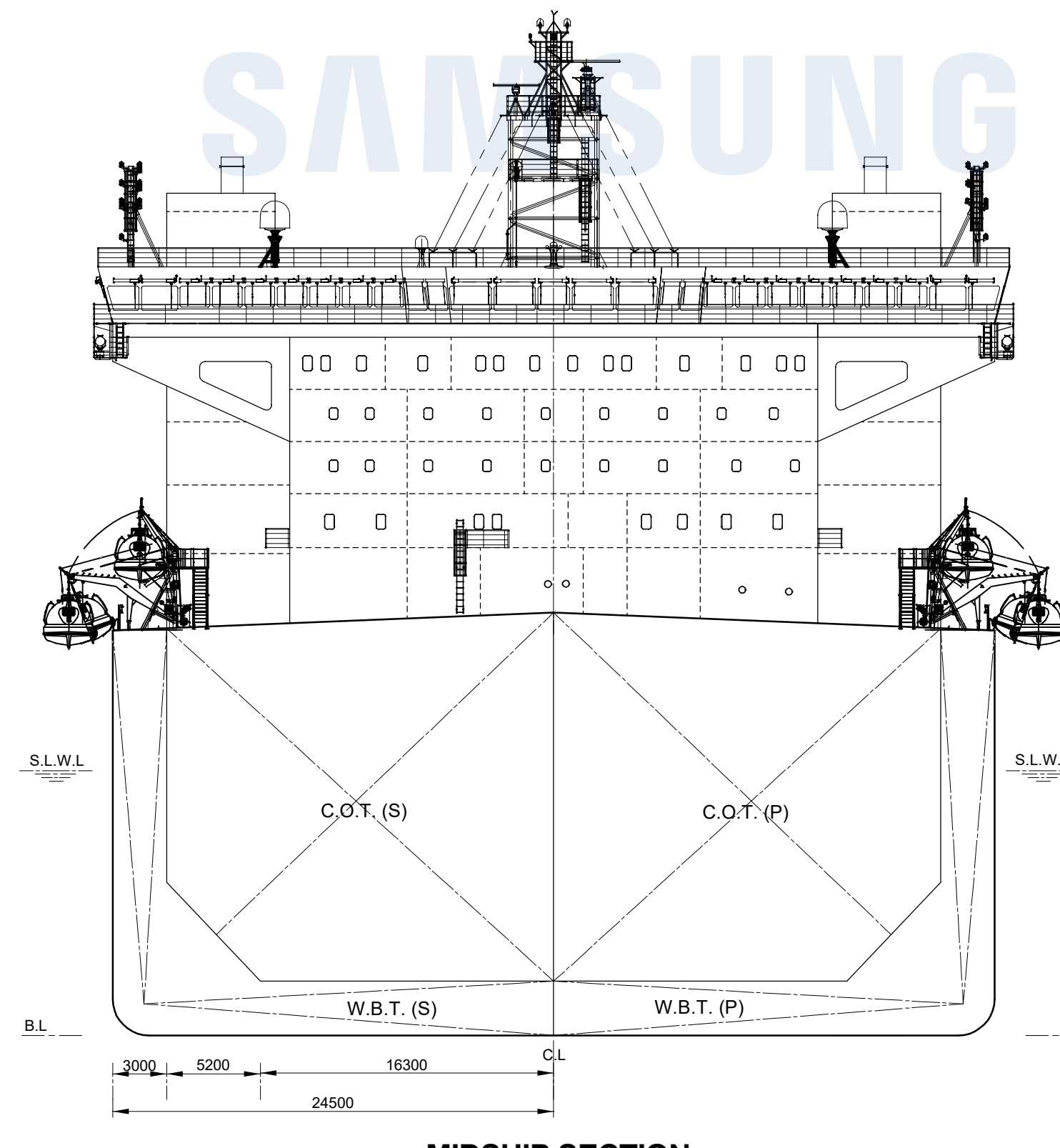
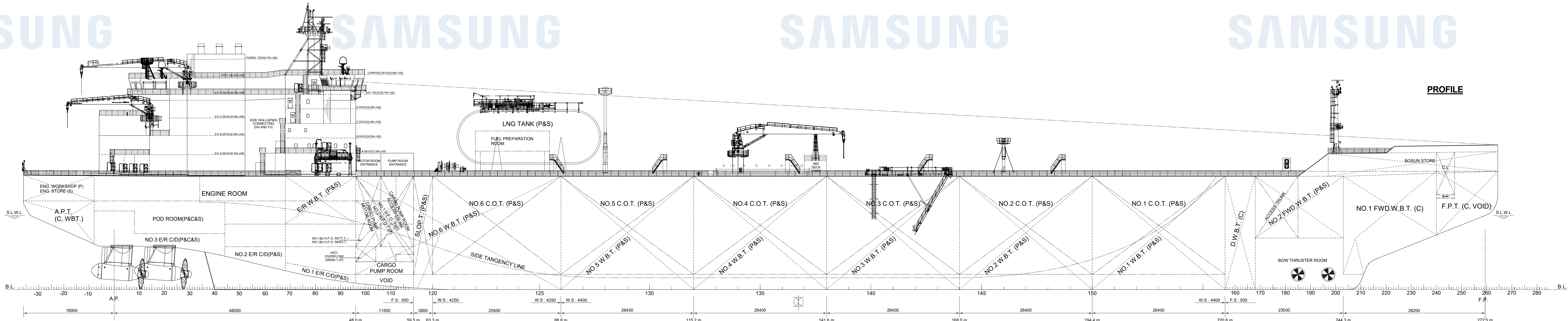


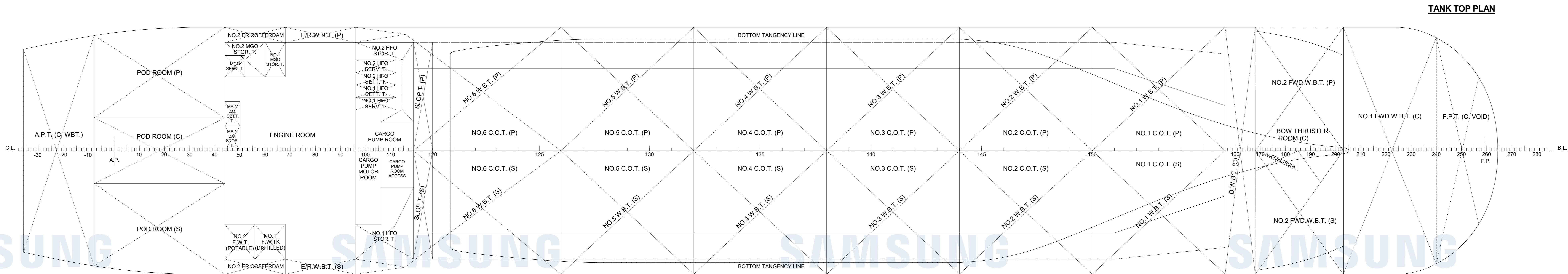
PRELIMINARY GENERAL ARRANGEMENT

PLAN HISTORY				
Rev.	Issued Date	Reason for issue	Prepared by	Checked by
-	13 Jan. 2022	Issued for Approval	J. H. Kim	J. M. Baek



PRINCIPAL PARTICULARS

MAIN DIMENSIONS		
LENGTH O. A.	Apprx. 293. m	
LENGTH B. P.	272.5 m	
BREADTH (MOULDED)	49.0 m	
DEPTH (MOULDED)	22.5 m	
DESIGNED DRAUGHT (MOULDED)	14.5 m	
SCANTLING DRAUGHT (MOULDED)	14.7 m	



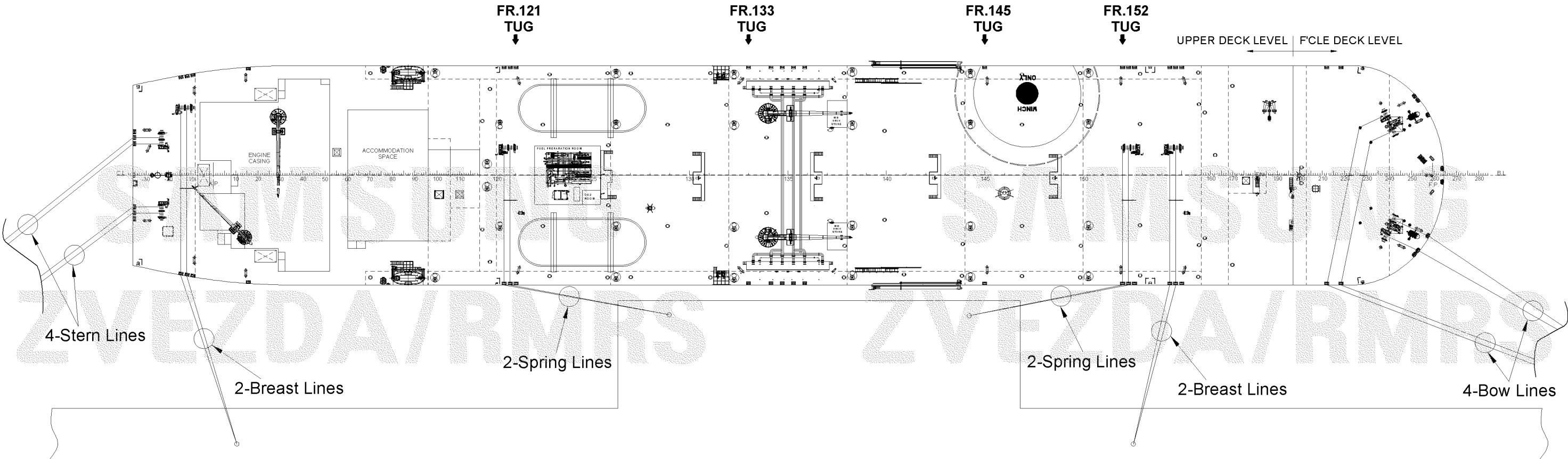
SN2387 / 070	RMRS	RUSSIA
SN2386 / 069	RMRS	RUSSIA
SN2385 / 068	RMRS	RUSSIA
SN2384 / 067	RMRS	RUSSIA
SN2383 / 066	RMRS	RUSSIA
SN2382 / 065	RMRS	RUSSIA
SN2381 / 064	RMRS	RUSSIA
SN2380 / 063	RMRS	RUSSIA
SN2379 / 062	RMRS	RUSSIA
SN2378 / 061	RMRS	RUSSIA
Project No.	IMO No.	Class
Registration		

This document is the property of SAMSUNG HEAVY IND., CO. and must in no case wholly or partially be copied, shown or given to the third party without SAMSUNG's consent.		Ship Type:	120,000 DWT LNGF Arctic Shuttle Tanker
Department:		Ship name:	
Basic & General Design		Document Title:	Preliminary GENERAL ARRANGEMENT
Project No.:	SN23787060818238384558587	Buyer Document no.	
Department:	0618238384558587686970	Builder Document no.	PB10110
Approved by:	J. M. Baek	Scale:	Unit: mm Consolidated No.
Checked by:	J. M. Baek		
Prepared by:	J. H. Kim		
SAMSUNG HEAVY IND., CO., LTD.			
GEOJE SHIPYARD, KOREA			

IDEAL MOORING LAYOUT

(S=1/900)

* NOTE : PATTERN AND TENDING OF MOORING LINES SHALL BE ADJUSTED ACCORDING TO ACTUAL TERMINAL LAYOUT.



TYPICAL DETAIL FOR SNAP BACK ZONE WARNING MARK

NOTES

1. The snap-back mark will be painted in yellow & black color.
2. The size of tiger stripe & warning sign can be adjusted by the state of the surrounding interference.
3. The location of marking can be adjusted by the state of the surrounding interference in detail design stage.

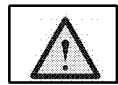
ON WALL

In case of entering mooring area



DANGER
YOU ARE ENTERING
SNAP BACK ZONE

In case inside mooring area at a conspicuous locations



DANGER
YOU ARE INSIDE
SNAP BACK ZONE

ON LADDER

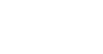
In case of mooring area up/down stairs



DANGER
YOU ARE ENTERING
SNAP BACK ZONE



DANGER
YOU ARE ENTERING
SNAP BACK ZONE



OR



DANGER
YOU ARE ENTERING
SNAP BACK ZONE



DANGER
YOU ARE ENTERING
SNAP BACK ZONE



ON DECK

In case of entering mooring area



DANGER
YOU ARE ENTERING
SNAP BACK ZONE



DANGER
YOU ARE ENTERING
SNAP BACK ZONE



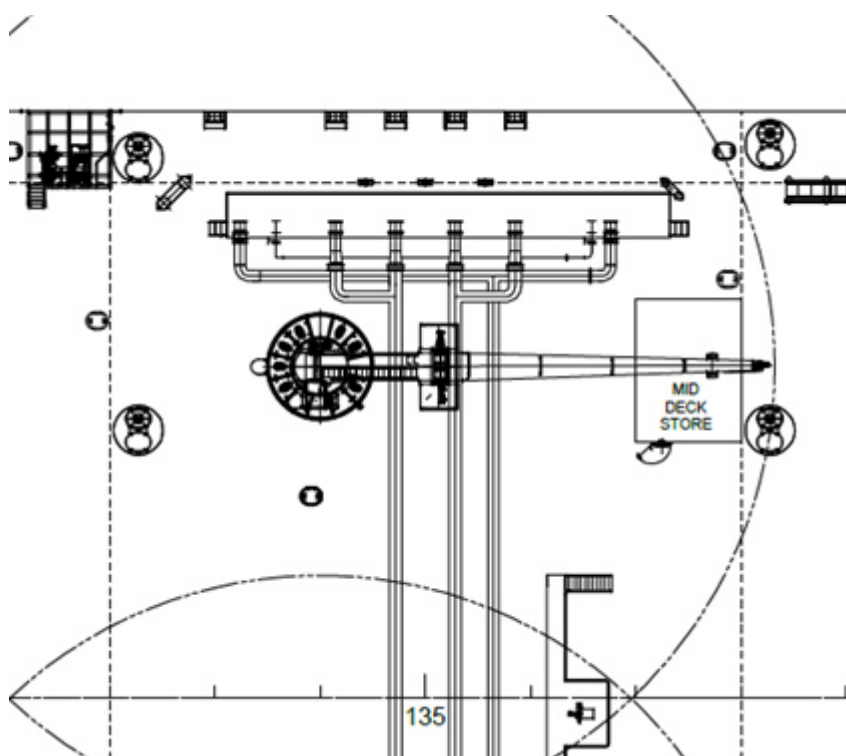
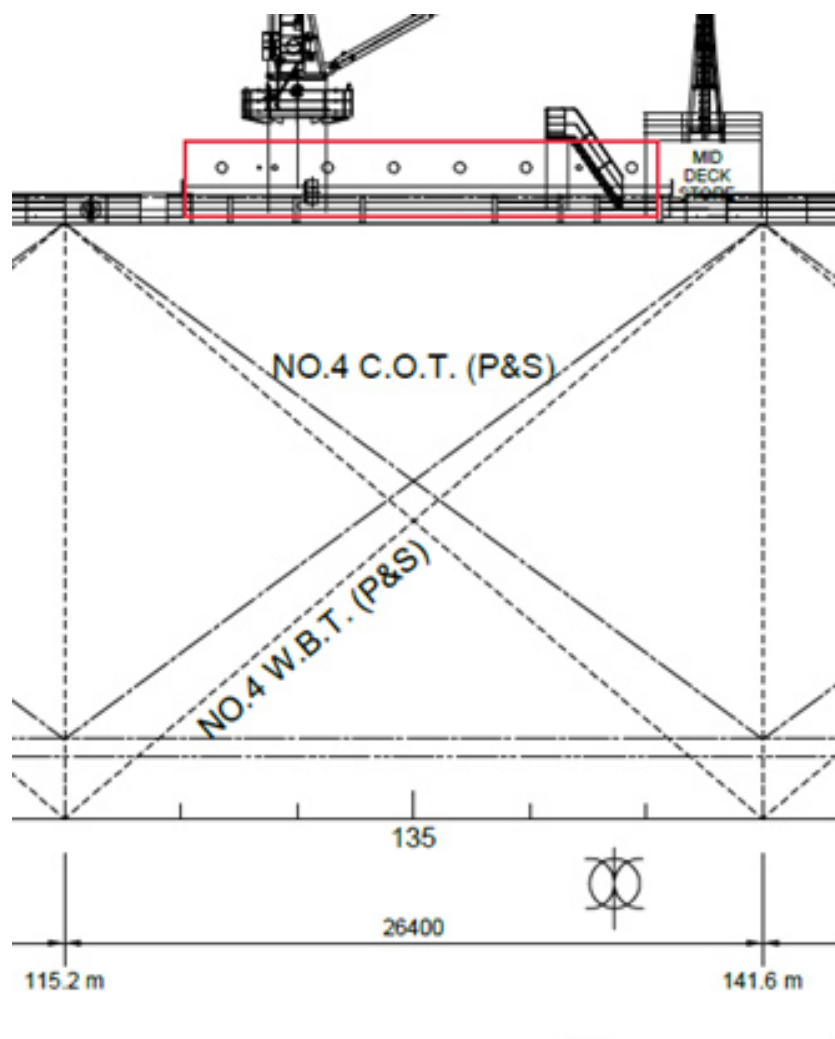
DANGER
YOU ARE ENTERING
SNAP BACK ZONE



DANGER
YOU ARE ENTERING
SNAP BACK ZONE



Схема манифолдов, проект 120К



2) Cargo manifold

Cargo manifold shall be arranged and constructed in accordance with the OCIMF Recommendations for Oil and Chemical Tanker Manifolds and Associated Equipment (1st Edition 2017).

Portable reducers of mild steel shall be supplied in accordance with the OCIMF recommendation, and number of distance pieces and reducers shall be as follows:

Size	Numbers	Storage
16" x 16"	8 total (principal, hinged cover)	-
16" x 8"	4 total (stock)	Deck store or upper deck near the cargo manifold
16" x 10"	4 total (stock)	
16" x 12"	4 total (stock)	

One (1) spill tank having a compartment shall be fitted at each side of the cargo manifold for cargo/fuel oil drainage. Supports for spill tanks shall be made with flexible joint connection & welded on the upper deck.

Working platform with open type grating shall be provided on each spill tank top.

The spill tank shall extend about 1,200 mm from the outermost pipe flange.

Drain from spill tank (port and starboard) and cargo manifold shall be led to the nearest cargo oil tank through permanently installed piping system by gravity

Drain from spill tray shall be equipped with air driven pump (each 10m³ x 20mTH) to No.4 cargo oil tank.

Double drain valves (ND 50) shall be provided on each cargo manifold.

A boss with gauge cock for portable pressure gauge and a boss with pocket for portable thermometer shall be provided on each cargo manifold, and each four (4) sets of portable pressure gauge and thermometer shall be supplied.